



BELLE VALLEY
DISTRICT #119
BELLEVILLE, IL



**Return to
School Plan
2020-2021**



R.Dane Gale, Ed.S
Superintendent

Tamara L. Leib, Ed.D
Middle School Principal

Cindy Callahan, M.S.
Elementary Principal

July 22, 2020

Dear Belle Valley Families:

At the July 21, 2020 Board of Education meeting, the Belle Valley administrative team presented our Return to School plan. The plan is based with flexibility in mind and grounded in ISBE, IDPH, and CDC recommendations. An underlying tone to the plan is the health and well-being of our students and staff. Safely returning to school is a top priority and we worked together with local school districts, the Regional Office of Education, the Illinois Department of Public Health, and the State Board of Education to develop this plan for the 2020-2021 school year. During this pandemic, we remain committed to providing a high-quality learning environment that addresses the physical, mental, and social/emotional needs of our students.

We received over 360 parent responses from the return to school survey and that feedback was very helpful. The survey indicated a significant portion of parents may choose to keep their child home and receive remote learning instruction. We understand our families must consider the learning option best suited for their child's needs and that those needs may vary, depending on the child's age and health status. We want parents to know that they do have the option of choosing remote learning for one child and face-to-face learning for another.

The following is Belle Valley's plan for the opening of the 2020-2021 school year. This plan is not an exhaustive list but represents a starting point as we work through best practices outlined by the ISBE, IDPH and CDC. This plan is tied directly to the Governor's "phase plan" and therefore may change if the Governor moves the State into another "phase."

We look forward to the day when the state moves to Phase 5 and we can all return to a normal school routine. Until that time we will work diligently to provide students with a safe learning environment. We ask for patience as there is always the possibility we will need to fine tune the plan to meet ever changing situations and student needs.

Sincerely,
Belle Valley Administrative Team

Belle Valley Reopening Plan Introduction

July 22, 2020

We understand that no model eliminates all risk; bringing students and staff back to campus is inherently more risky than continuing 100% with remote or distance learning. However, we must weigh the risk of reopening with the risk of continuing to have our student isolated at home, away from their friends, receiving instruction with limited coaching and support. Thus, if we are going to take on increased risk, we want to mitigate those risks to the best of our ability. The following **general guidelines** are critical for everyone's health and wellness and must be followed while on the Belle Valley premises. Please share the applicable information listed below with your child:

1. **Social Distance:** keeping 6 feet distance for each other as much as possible.
2. **Face mask/covering:** All students will be provided a mask and it must be worn while on campus and outside the building if social distancing is not possible. (students may bring a mask from home) Student respiratory medical conditions are exempt from the mask mandate with written verification by a medical doctor.
3. **Hygiene:** Students will be given instruction on proper hand washing, face touching, and other hygiene applications. All students will be monitored and given opportunities to wash their hands with soap and water. Hand sanitizer will be available in all classrooms and throughout the entire building. High touch surfaces will be sanitized during the school day by a custodian.
4. **Staff Training:** All staff will be trained on aseptic techniques and procedures.
5. **Self-certification: Staff and Students may be self-certified that they are COVID free and therefore, may attend school that day. Forms for this certification will be provided. No adult or child should come to school with any of the COVID symptoms. The school reserves the right to monitor any student's temperature using infrared, touchless thermometers.**
6. **Visitors:** Access to the school building will be extremely limited. Only essential personnel will be allowed on campus during Phase 4. Parents will be allowed in the building with screening for essential business (i.e. IEP meetings). Appointments will be required.
7. **Building Cleaning:** CDC guidelines for will be incorporated into our daily cleaning schedule. A COVID-19 disinfectant (killer) spray has been purchased.
8. **Playground:** The playground equipment will be sprayed with Clorox using a commercial sprayer twice a day.
9. **Buses:** Face masks must be worn on the bus at all times. If you do not have a mask, one will be provided. The bus company will follow all ISBE and IDPH sanitization protocols and guidelines.

Belle Valley Reopening Plan Overview for 2020-2021

July 22, 2020

Phases are determined by the governor and the state of Illinois. Should the governor change phases, the school will follow the guidelines for that stage. Information provided below is subject to change and based on the guidance of the state, local health authorities, and school district needs.

Phase 3: Remote Learning (no instructional options)

- If Illinois is in Phase 3 on August 1, we will continue with remote learning for the first quarter. Remote learning Instructional devices will be provided to all students.
- If at any time after school has started we return to Phase 3, the school will return to remote learning. At that time, the district will determine the earliest start date to return to in-person learning.

Phase 4: This is the current phase as of July 22, 2020

Parent Instructional Option 1: Traditional Face-To-Face with Modifications

- If Illinois is in Phase 4 on August 1, students will return to school for face-to-face instruction with modifications made to follow CDC, IDPH, and ISBE requirements.

Parent Instructional Option 2: Remote Learning

- A dedicated teacher will provide daily on-line instructional opportunities during regular school hours. Remote learning instructional devices (Chromebooks) will be provided.

Phase 5: Traditional Face-To-Face with no modifications (no instructional options)

- If Illinois reaches Phase 5, school will resume a non-restrictive (PPE) learning environment at a mutually agreed upon start date, no later than 2 weeks after Phase 5 begins.

2020 Open House

- Traditional open house is cancelled for August 17th due to state guidelines for limiting the number of people in the building. Students may bring supplies on the first day of school.
- Early childhood, kindergarten, and 5th grade students are invited to meet their teacher, drop off supplies, and walk through the building on Thursday, **August 13th** between **noon and 7:00 p.m.** New students in all grades may also visit the building during this time. Please look for an invitation from your teacher to sign up for a time. (Pre-K students will also be able to visit their classrooms before school. Please look for a separate sign up.

PHASE 3 GUIDANCE INFORMATION

All efforts will be made to follow the guidelines provided by these organizations:

- Centers of Disease Control and Prevention
- Illinois Department of Public Health
- Illinois State Board of Education

Access to Campus

- Only essential personnel will be allowed on campus.
- All people entering the building will be screened via infrared thermometers. Anyone with a temperature of 100.4 degrees or higher will not be allowed to enter
- No parents are allowed inside the school building without explicit permission from an administrator.
- District will make accommodations for students who need to pick up materials at school.

Lunch

- Lunch will be provided to all students who request it through the curbside pick-up program previously established at the end of last year.

Ongoing Sanitation Procedures

- The school will continue sanitation procedures established during remote learning by deep cleaning with a known COVID-19 disinfectant in all classrooms and common spaces.

Remote Learning

- The platform for remote learning will be Google Classroom. All teachers will leverage Google Classroom to assign and turn in homework assignments. Teachers will receive ongoing training in best practices for using Google Classroom.
- Students in 2nd-8th grade will be assigned Chromebooks to take home for online access learning. K-1st grade students will be assigned a tablet or other appropriate technology to assist with online learning.
- Students are expected to fulfill academic requirements such as meeting deadlines and turning in work as they would be during in-person instruction.

Social/Emotional Learning

- Teachers will receive ongoing training in trauma-informed practices and practice trauma-informed teaching.
- Arrangements will be made with social workers and teachers to provide ongoing support for the students' social and emotional welfare.

Curriculum

- Students will be receiving on-grade instruction using district established scope, sequence, and pacing guides.
- Remediation for missing skills will be handled on a case-by-case basis.

Special Education

- Direct and related services will be provided as indicated in each student's individualized remote learning plan which was developed in the 2019-2020 school year.
- For students new to Belle Valley, case managers will work with parents of students with IEPs to develop a remote learning plan as soon as possible after the start of the 2020-2021 school year.
- IEP meetings will be conducted through phone and/or virtual conferences.
- Evaluations and referrals will be conducted under directive of ISBE and US Department of Education.

Outside Use of Building

- During Phase 3, no outside groups will be allowed to use the building.

Extra-Curricular Activities

- Cancelled during Phase 3.

PHASE 4 GUIDANCE INFORMATION

All efforts will be made to follow the guidelines provided by these organizations:

- Centers of Disease Control and Prevention
- Illinois Department of Public Health
- Illinois State Board of Education

In-Person Learning

The first day of in-person learning will be **August 18th, 2020**. In-person learning will occur every day with a shortened schedule. Students will receive similar instruction as they would during a traditional school day, and instruction in all core classes will be provided. Breakfast and lunch will be served in the classroom, cafeteria, or in designated areas. The start and end times for each grade level are:

5th-8th grade	7:45 am--1:05 pm
K-4th	8:30 am--1:45 pm

Remote Learning

Any parent/guardian choosing this option must make this commitment by August 1st for the entire 1st quarter of school. Parents will be responsible for picking up their child's remote learning materials, which may include necessary technology, workbooks, and other tools. Students will be given grades in accordance to established grade level guidelines. Grade level guidelines for remote learning that outline parent, student, and teacher expectations for remote learning will be provided.

Access to Campus

- All people entering the building may be screened via infrared (touchless) thermometers. Anyone with a temperature 100.4 degrees or higher will not be allowed to enter. Parents must screen their child using the approved COVID-19 daily checklist before leaving home to make sure they are not running a fever or exhibiting any COVID related symptoms. Students will be quarantined with a fever 100.4 Fahrenheit or higher and parents must immediately pick their child up. IDPH may be contacted for follow-up screening.
- Only essential personnel and visitors will be allowed on campus during Phase 4.
- Parents will be allowed in the building with screening for essential business (i.e. IEP meetings). Appointments will be required.
- District will develop protocols for contactless student pick up for students that need to leave campus early.

Personal Safety Precautions (detailed)

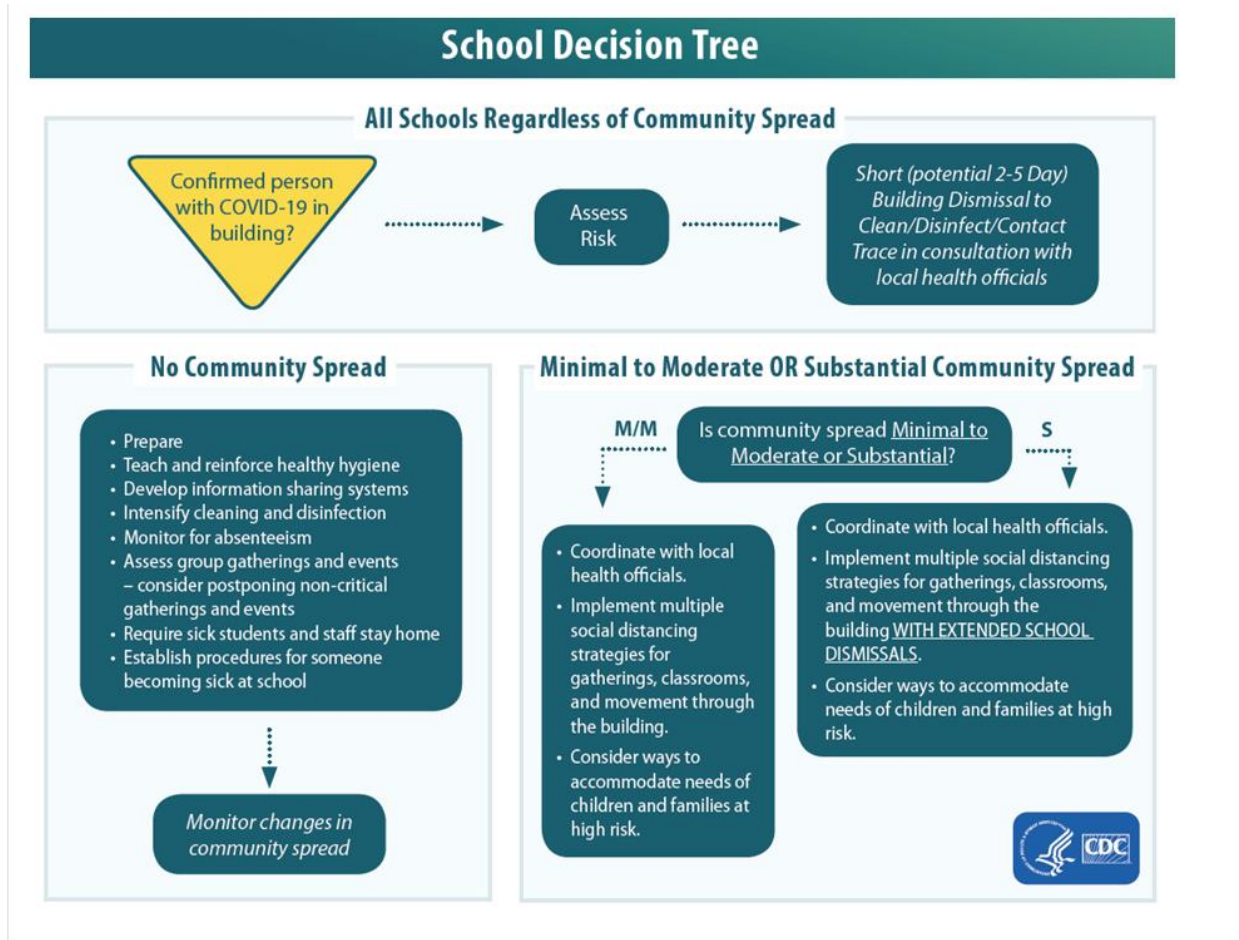
- All persons who enter the building are required to wear face masks. Parents are encouraged to provide a personal mask for each child and wash them daily. In the event that a student does not provide his or her own face mask, the district will provide one for the student.
- All students on buses and school property must wear masks. A mask will be provided if the student does not have one.
- For students who have a medical reason that prevents them from wearing a mask, the district strongly recommends that for his or her personal care and safety, that child choose remote learning until it is safe to attend school without a mask. (Phase 5)
- All persons must maintain social distancing (6 ft.) within the building when possible. If outside, with teachers' permission the masks may be removed as long as social distancing is possible.
- Hand sanitizer will be provided in all classrooms and students will be taught the proper hand washing techniques and be given multiple opportunities to wash their hands throughout the day.
- Student movement throughout the building will be minimized.
 - Students in grades K-8th will remain in a dedicated classroom for the majority of the day.
 - To minimize inter-student contact, students will stay with their homeroom groups throughout the day in all grades. Teachers will rotate or push into classrooms.
 - Teachers will create a schedule for restroom and playground breaks to minimize student contacts.
- Staff handling food or interacting closely with students will be provided with disposable gloves.
- Students are welcome to bring their own water bottles, but water fountains will be open and sanitized by the day custodial staff. The District is ordering water fountains with bottle fillers.
- Students will have their own supplies (crayons, markers, pencils, etc.) and not share supplies.
- Students may be checked for symptoms daily. Any students exhibiting symptoms, including a fever 100.4 or higher, will be excluded from school that day. Students must be fever free for 24 hours with no other symptoms to be reinstated to school.
- Students will be provided scheduled mask breaks as often as reasonable.

Daily Health Screenings (forms will be sent home for daily self-certification)

All students, staff members, and visitors will be required to conduct a daily health screening. ***If any of the questions below are answered “YES,” individuals must STAY HOME and contact the school office to report the absence.*** Teachers will also be required to report any student with these symptoms to the school nurse immediately.

- Do you have a temperature of 100.4 F or higher?
- Are you taking fever-reducing medicines, such as those that contain aspirin, ibuprofen, or acetaminophen, in order to reduce your fever?
- Have you had close contact with someone with COVID-19 within the last 14 days?
- Have you returned from travel outside of the United States or on a cruise ship or river boat within the past 14 days?
- Are you experiencing any of the following symptoms?
 - Chills
 - Cough
 - Shortness of breath or difficulty breathing
 - Fatigue
 - Muscle or body aches
 - Headache
 - New loss of taste or smell
 - Sore Throat
 - Congestion or runny nose
 - Nausea or vomiting
 - Diarrhea

Response to Positive Case of Covid-19



In the event a positive case of COVID-19 is reported in our building, Belle Valley administration, in conjunction with the Illinois Department of Health and St. Clair County Health Department will assess the risk and determine whether a partial or full school closure is needed.

When can my child* return to school?	
Child Had Close Contact with Someone Who Tested Positive or is Suspected of Having COVID-19	After 14 day quarantine period from date of last contact with individual
Child Tested Positive for COVID-19	1) At least 10 days have passed since symptom onset AND 2) At least 72 hours since resolution of fever AND 3) Improvement of respiratory symptoms AND 4) Negative COVID-19 test**
Child Suspected of Having COVID-19 AND Had Symptoms	
Child Tested Positive for COVID-19 But Had No Symptoms	1) After at least 10 days have passed since date of first positive COVID-19 test** OR 2) Negative COVID-19 test at least 24 hours after first test**
Child Exhibit One or More Symptoms of COVID-19, But is Suspected of Having COVID-19 Examples: Seasonal Allergies, Ear Infection, Seasonal Flu, Strep Throat, Migraine, Etc.	1) 72 hours fever free with written reason for symptoms OR 2) Release from health care provider
Individual Return from International or High-Risk Travel	After 14 day quarantine starting from date of return from trip

*Guidance also applies to all individuals who work or volunteer in the school.

**District will provide locations where testing is provided at a free or reduced cost

Breakfast/Lunch

- Breakfast will be picked in the cafeteria using social-distance guidelines and taken to classrooms.
- Lunches will be served and eaten in classrooms, the cafeteria, gymnasium or other social distancing locations.
- No self-service for condiments or food.

Recess

- Elementary students will be allowed a short recess in conjunction with breakfast. Guidelines for socially-distanced recess will be implemented following the IDPH and CDC guidelines.

Classrooms

- In accordance with guidelines, students will remain in classrooms as much as possible during the day to limit exposure.
- Teachers will minimize areas where students congregate by eliminating group areas like carpets. Students will remain in their seats as much as possible.

Daily Sanitation Procedures

- Using an approved Covid-19 disinfectant on all surfaces.
- Sanitizing throughout the day in bathrooms and public areas.
- Desks and chairs will be sanitized daily.
- Water fountains will be sanitized with a “mist” sprayer.

Buses

- All students on the bus will be required to wear a mask. Students at the bus stop who do not have a mask will be provided one.
- Special needs bus students will also be required to wear a mask
- If at any time, more than 50 students board the bus, the bus will immediately transport students to school and return to the remainder of their route. Adjustments to the bus schedule may need to be made.

Parent Pick up and Drop Off

- Students should put their mask on before leaving the car when coming into school and leave their mask on until they are in the car when leaving school.
- Students may be screened with a touchless thermometer when entering school.

Preparing for the Possibility of a Return to Remote Learning

There is a possibility that the district and/or classes may return to remote learning at any time during Phase 4. Students should be prepared to take learning online. All community members should be prepared for remote learning.

- The platform for remote learning will be Google Classroom. All teachers will leverage Google Classroom to assign and turn in homework assignments. Teachers will receive ongoing training in best practices for using Google Classroom.
- Students will begin the year using Google Classroom with teacher guidance and support.
- In the event of return to remote learning, students in 2nd-8th grade will be assigned Chromebooks to take home for online access learning. K-1st grade students will be assigned a tablet or other appropriate device to access online learning.

Social/Emotional Learning

- Teachers will receive ongoing training in trauma-informed practices and practice trauma-informed teaching.
- Social workers will push into classrooms on a regular and rotating basis.
- Elementary students will receive weekly lessons in SEL during specials times. Middle school students will have SEL embedded into healthy living, social studies, and/or advisory.

Curriculum

- Students will be receiving on-grade instruction using district established scope, sequence, and pacing guides.
- Remediation for missing skills will be handled on a case-by-case basis. All students will be given traditional benchmark testing (Star360) in August to assess gaps in learning.

Special Education

- Direct and related services will be provided as indicated in each student's IEP for students who are present in face-to-face learning.
- Students whose parents choose not to have their child participate in face-to-face learning will be provided remote learning opportunities as directed by ISBE.
- For students new to Belle Valley, case managers will work with parents of students with IEPs to develop a remote learning plan as soon as possible after the start of the 2020-2021 school year in the event that Illinois reverts back to Phase 3.
- IEP meetings will be conducted in person. Parents will have an option of participating in person or through phone or virtual conference.

Outside Use of Building

- During Phase 4, no outside groups will be allowed to use the building.

Sports

- During Phase 4, Belle Fair conference schools will determine if sports can safely be implemented. Fall sports have been cancelled and the decision for winter sports will be decided in late September.

Extra-Curricular Activities

- Following recommendations from CD and the IDPH, Belle Valley, along with all Belle-Clair conference members, has made the decision to cancel fall sports at this time. The district and the conference will continue to evaluate the situation as it progresses to determine future sports seasons.

Extended School Program

- ESP will continue to operate and follow the same District cleaning and guidance protocols that are used in classrooms.